

# CHAMOT

## Recombinant Human Galectin- 7

CM152-5HP  
CM152-20HP  
CM152-100HP  
CM152-500HP  
CM152-1000HP



CHAMOT

喬默生物技術(上海)有限公司  
CHAMOT BIOTECHNOLOGY CO., LTD.

# CONTENT

**1** 产品简介

**2** 产品组成

**3** 产品储存

**4** 产品使用

## Recombinant Human Galectin-7

编号:	CM152-5HP CM152-20HP CM152-100HP CM152-500HP CM152-1000HP	规格:	5 µg 20 µg 100 µg 500 µg 1 mg
类别:	重组蛋白	应用:	Functional Assay

### 产品简介

**描述:** The galectins are a family of beta-galactoside-binding proteins implicated in modulating cell-cell and cell-matrix interactions. Galectin-7 is a protein that in humans is encoded by the *LGALS7* gene. It is expressed at all stages of epidermal differentiation (i.e., in basal and suprabasal layers). The protein was found mainly in stratified squamous epithelium. The cellular localization and its striking down-regulation in cultured keratinocytes imply a role in cell-cell and/or cell – matrix interactions necessary for normal growth control.

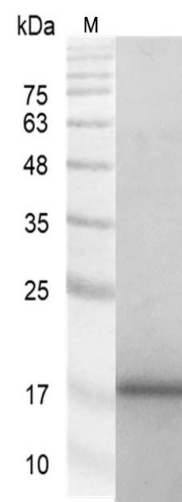
**来源:** *Escherichia coli*

**纯度:** >98% as determined by SDS-PAGE. Ni-NTA chromatography.

**生物学活性:** Measure by its ability to chemoattract human THP1 cells. Chemotactic activity was observed at a concentration of 0.5 µg/mL.

**内毒素检测:** < 0.1 EU per 1 µg of the protein by the LAL method.

**蛋白序列:** SNVPHKSSLPEGIRPGTVLRIRGLVPP  
NASRFHVNLLCGEEQGSDAALHFNP  
RLDTSEVVFNSKEQGSWGREERPGV  
PFQRGQPFEVLIIASDDGFKAVVGDA  
QYHHFRHRLPLARVRLVEVGDDVQL  
DSVRIF with polyhistidine tag at the N-terminus



SDS-PAGE analysis of recombinant human Galectin-7

## 产品组成

成分：从含有 1X PBS, pH 7.4 溶液中冻干的蛋白质.

## 产品储存/运输

产品形式	储存温度	储存时间
冻干粉	-20℃至-80℃	自收到之日起1年
重悬液 (初始)	2℃至8℃	不超过1周
重悬液 (经稀释)	-20℃至-80℃	3到6个月

运输方式：蓝冰

## 产品使用

- 1、开盖前，建议3000-3500rpm离心5min。
- 2、推荐使用无菌水重悬冻干粉，溶液浓度不低于100μg/mL，不高于1mg/mL，并室温静置至少20min以充分溶解。勿涡旋剧烈振荡。
- 3、重悬后的溶液，2 -8℃无菌保存不超过1周。
- 4、如需长期保存，推荐使用无菌的含载体蛋白（如0.1 %BSA、10 % FBS 或5 % HSA ）的溶液进一步稀释（不低于10ug/mL）后分装保存，-20℃至 -80℃无菌保存3到6个月。无血清实验需求时，可更换为 5%海藻糖溶液作为载体。避免反复冻融。

WB= Western Blot; IP= Immunoprecipitation; IF= Immunofluorescence; IHC= Immunohistochemistry;  
FACS= Fluorescence activated Cell Sorting; FA= Functional Assay